

ADDENDUM NO. 1

TO: ALL BIDDERS
PROJECT: ITB PW 37-19 – FOY SHAW PARKWAY
BID TIME AND DATE: 3:00 PM LOCAL TIME, September 04, 2019 (NO CHANGE)

August 22, 2019

The following items are hereby incorporated into the project manual, procurement documents, contract documents, plans and specifications:

ITEM NO. 1 – SECTION 00100 INSTRUCTIONS TO BIDDERS

Revised Article 9.01 of Document 00100 to read:

9.01 The number of days within which, or the dates by which, the Work is to be (a) Substantially Completed, and (b) also completed and ready for final payment, are set forth in Article 3 of the Agreement.

ITEM NO. 2 – SECTION 00100 INSTRUCTIONS TO BIDDERS

Revised Article 10.01 of Document 00100 to read:

10.01 Provisions for liquidated damages, if any, are set forth in Article 3 of the Agreement.

ITEM NO. 3 – SECTION 00410 BID FORM WITH ATTACHMENTS

Revised Article 6.01 of Document 00410 to read:

6.01 BIDDER agrees that the Work will be substantially complete within 270 calendar days after the date when the Contract Times commence to run as provided in Paragraph 4.01 of the General Conditions, and will be completed and ready for final payment in accordance with Paragraph 15.06 of the General Conditions within 330 calendar days after the date when the Contract Times commence to run.

ITEM NO. 4 – SECTION 00410 BID FORM WITH ATTACHMENTS

The Bid Schedule, pages 00410-3 through 00410-5 has been revised:
Changes to Item Nos. 3, 5, 7 and 16.

Replace Pages 00410-3 through 00410-5 with the revised sheets 000410-3 through 00410-5 (transmitted herewith and labeled as Addendum No. 1 in the heading).

ITEM NO. 5 – PROJECT DRAWINGS

The following project drawings are revised: Sheet Number 1, Sheet Number 2, Sheet Number 4, Sheet Number 154 and Sheet Number 155. Copies of the revised drawings are attached and labeled as Addendum No. 1 in bottom left corner.

ITEM NO. 6 – QUESTIONS RECEIVED PRIOR TO THE PRE-BID MEETING

Question 1 – In reference to the geo report. What will be the required depth for the stripping of the existing topsoils after clear and grub operations?

Answer: Clearing and Grubbing depths should meet the requirements of FDOT Specification Section 110-2.2

Question 2 – Sheet No. 155: What is the traffic control plan for Skyline Dr and John Givens Rd

Answer: The intent is to utilize a Detour along Fairchild Road and Airport Road during the construction of the Skyline Drive and John Givens Road intersection. This detail will be added to sheet 155.

Question 3 – Where is the sheet for "Special Detour 1"

Answer: The "Special Detour 1" pay item should have not been included in the plans and will be removed.

Question 4 – Sheet No. 18: For clarification: Is the widening detail on Sheet 18 to be used at the Inter. of Cavalier and Register Ln?

Answer: The widening pavement design shown on sheet 18 will apply to the intersection of Cavalier and Register Lane

Question 5 – Sheet 47 & 52: What will the wall thickness be required for the steel casing?

Answer: The wall thickness needs to meet the requirement of FDOT Specification Section 556-2.1, Bullet 3: "All steel pipe may be bare inside and out, with the manufacturer's recommended minimum nominal wall thicknesses to meet the greater of either installation, loading or carrier requirements."

Question 6 – Sheet 47 & 52: Will an exterior and interior coating be required for the steel casing?

Answer: Per FDOT Specification Section 556-2.1, Bullet 3 all steel pipe may be bare inside and out

Question 7 – Sheet 47 & 52: How much clearance will be required between the OD of the carrier pipe and ID of the steel casing?

Answer: Per FDOT Specification Section 556-2.1, Bullet 1: “The size of the steel casing must be at least 6 inches larger than the largest outside diameter of the carrier. Casing size must accommodate pressure pipe or carrier pipe joint restraints.” The plans show 12 inches for flexibility in construction.

Question 8 – Sheet 47 & 52: Will HDPE be allowed for the carrier pipe as an alternative for the specified pipe?

Answer: HDPE pipe can be used as the carrier pipe as long as it meets the requirements of FDOT Specification Section 556-2 requiring smooth interior and exterior walls: “...only use encasement pipe or uncased carrier pipe material that is new and has smooth interior and exterior walls.”

Question 9 – Sheet 47 & 52: Will the flowable fill be required to encompass all of the annular space of the carrier pipe or just over the top and sides allowing the carrier pipe to rest in the bottom of the steel casing?

Answer: Just the top and sides to allow the pipe to rest in the bottom of the steel casing.

ITEM NO. 7 – QUESTIONS RECEIVED AT PRE-BID MEETING AND LATER

The following questions were posed during the Pre-Bid meeting or later:

Question 1 – Jack and Bore:

Answer: The plans call for both a 54” and 72” jack and bore. It should be noted that these pipes will not actually be jacked and bored. The geotechnical engineer anticipates several inches of “short-term” settlement at these two culvert locations. In order to mitigate adverse impacts from the anticipated settlement, the contractor is to install these casings prior to constructing the embankment. The contractor will then follow-up by installing the carrier pipe, grout and proposed headwalls.

Question 2 – Lane Closures:

Answer: Per the FDOT Driveway connection permit and Note 14 on sheet 153 of the plans, all lane closures, detours and lane shifts of any lanes along the state highway system must be reviewed by and approved by FDOT before

commencement of work. The request must be in writing and received 2 weeks prior to the lane closure. It should be noted that the plans utilize lane shifts for the construction of both the eastbound left turn lane and westbound right turn lane along US 90. It should be noted that there are no lane closure restriction per FDOT's methodology for lane closure analysis.

Question 3 – Auburn Water Relocation:

Answer: Prior to construction, Auburn Water will remove as much of their existing water lines as possible. In order to complete Auburn Water's relocations, they will need the contractor to cut back the existing ground to the proposed grades at the intersection of Cavalier and US 90. Prior to the contractor doing sub-grade and base work, Auburn Water will excavate down to their existing water line tie-in and complete relocation of their water line crossing at Cavalier/Foy Shaw. Auburn Water will need 2 weeks, excluding holidays, to complete this work.

Question 4 – Sheet Piling

Answer: Sheet piling is to be placed prior to any earthwork operations and shall remain in place until permanent erosion control measures (sod and erosion mats) are in place and established.

END OF QUESTIONS

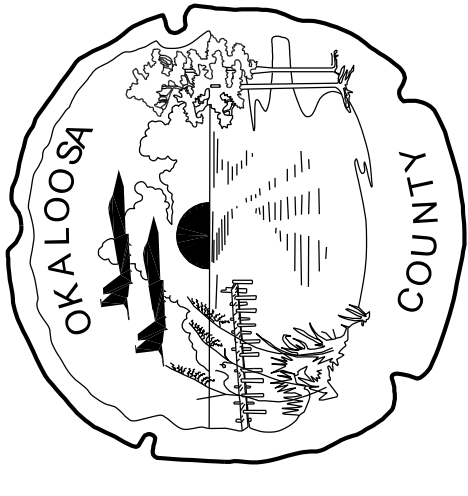
RECEIPT OF THIS ADDENDUM SHALL BE ACKNOWLEDGED BY WRITING THIS ADDENDUM NUMBER AND DATE IN THE SPACE PROVIDED ON DOCUMENT 00410-8, 'ADDENDUM ACKNOWLEDGEMENT - ATTACHMENT A.'

/s/ Roy Petrey
Roy Petrey, P.E.
Project Manager

BID TABULATION FOR FOY SHAW PARKWAY - FPN 425617-2-94-01						
Item No.	Pay Item No.	Description	UNIT	ESTIMATED QUANTITY	BID UNIT PRICE	BID PRICE
1	0101-1	MOBILIZATION	LS	1	\$	\$
2	0102-1	MAINTENANCE OF TRAFFIC	LS	1	\$	\$
3	0102-3	COMMERIAL MATERIAL FOR DRIVEWAY MAINTENANCE	CY	27	\$	\$
4	0102-60	WORK ZONE SIGNS	ED	11070	\$	\$
5	0102-74-1	CHANNELIZING DEVICES - DRUMS	ED	4050	\$	\$
6	0102-74-2	CHANNELIZING DEVICES - TYPE III	ED	3240	\$	\$
7	0102-99	PORTABLE CHANGEABLE MESSAGE SIGN	ED	1080	\$	\$
8	0102-911-2	REMOVABLE TAPE PAVEMENT MARKING - WHITE/BLACK	LF	620	\$	\$
9	0102-912-2	REMOVABLE TAPE PAVEMENT MARKING - YELLOW	LF	460	\$	\$
10	0104-1	ARTIFICIAL COVERINGS/ROLLED EROSION CONTROL	SY	58356	\$	\$
11	0104-10-3	SEDIMENT BARRIER	LF	12178	\$	\$
12	0104-12	STAKED TURBIDITY BARRIER	LF	3159	\$	\$
13	0104-15	SOIL TRACKING PREVENTION DEVICE	EA	4	\$	\$
14	0104-18	INLET PROTECTION DEVICE	EA	25	\$	\$
15	0110-1-1	CLEARING AND GRUBBING	LS/AC	1/17.59	\$	\$
16	0110-4-10	REMOVAL OF EXISTING CONCRETE	SY	386	\$	\$
17	0120-1	REGULAR EXCAVATION	CY	49296	\$	\$
18	0120-4	SUBSOIL EXCAVATION	CY	4450	\$	\$
19	0120-6	EMBANKMENT	CY	136151	\$	\$
20	0160-4	TYPE B STABILIZATION	SY	20268	\$	\$
21	162-1-11	PREPARED SOIL LAYER, FINISH SOIL, 6"	SY	58356	\$	\$
22	285701	OPTIONAL BASE GROUP 01	SY	4366	\$	\$
23	285706	OPTIONAL BASE GROUP 06	SY	15064	\$	\$

BID TABULATION FOR FOY SHAW PARKWAY - FPN 425617-2-94-01 (Continued)						
Item No.	Pay Item No.	Description	UNIT	ESTIMATED QUANTITY	BID UNIT PRICE	BID PRICE
24	0334-1-12	SUPERPAVE ASPHALT - TRAFFIC B	TN	1996.2	\$	\$
25	0337-7-80	FRICTION COURSE TRAFFIC B FC-9.5	TN	988.5	\$	\$
26	0400-1-2	CONCRETE CLASS I - END WALL	CY	20.9	\$	\$
27	0400-2-2	CONCRETE CLASS II - END WALL	CY	27.4	\$	\$
28	0415-1-6	REINFORCING STEEL - ROADWAY	LB	1648	\$	\$
29	0425-1351	INLETS, CURB TYPE P5	EA	12	\$	\$
30	0425-1361	INLETS, CURB TYPE P6	EA	1	\$	\$
31	0425-1521	INLETS, DBI TYPE C	EA	2	\$	\$
32	0425-1541	INLETS, DBI TYPE D	EA	1	\$	\$
33	0425-1551	INLETS, DBI TYPE E	EA	1	\$	\$
34	0425-1701	INLETS, GUTTER TYPE S	EA	3	\$	\$
35	430-175-118	PIPE CULVERT, 18"	LF	2732	\$	\$
36	430-175-124	PIPE CULVERT, 24"	LF	906	\$	\$
37	430-185-154	PIPE CULVERT, OPT MATL, JACK AND BORE, 54"	LF	246	\$	\$
38	430-185-172	PIPE CULVERT, OPT MATL, JACK AND BORE, 72"	LF	328	\$	\$
39	0430-830	PIPE FILLING & PLUGGING	CY	164	\$	\$
40	430-982-125	MITERED END SECTION, 18"	EA	2	\$	\$
41	430-982-129	MITERED END SECTION, 24"	EA	1	\$	\$
42	455-133-2	SHEET PILING STEEL, TEMPORARY-CRITICAL	SF	8917	\$	\$
43	0520-1-10	CURB AND GUTTER, TYPE F	LF	3746	\$	\$
44	0520-2-5	CURB, SPECIAL (RIBBON CURB)	LF	240	\$	\$
45	0520-6	SHOULDER GUTTER	LF	1010	\$	\$
46	0522-2	6" CONCRETE - DRIVEWAY	SY	218	\$	\$

BID TABULATION FOR FOY SHAW PARKWAY - FPN 425617-2-94-01 (Continued)						
Item No.	Pay Item No.	Description	UNIT	ESTIMATED QUANTITY	BID UNIT PRICE	BID PRICE
47	0524-1-2	CONC. DITCH PAVEMENT, NON REINFORCED, 4"	SY	1825	\$	\$
48	0530-3-4	RIPRAP - DITCH LINING	TN	118.6	\$	\$
49	0550-10-232	TYPE B FENCING	LF	3579	\$	\$
50	0550-60-213	TYPE B FENCING GATE	EA	2	\$	\$
51	0570-1-1	PERFORMANCE TURF	SY	39264	\$	\$
52	0570-1-2	PERFORMANCE TURF, SOD	SY	19092	\$	\$
53	0571-1-13	PLASTIC EROSION MAT, TYPE 3	SY	15359	\$	\$
54	0700-1-11	SINGLE POST SIGN (UP TO 12 SF)	EA	5	\$	\$
55	0700-1-60	SINGLE POST SIGN (REMOVAL)	EA	2	\$	\$
56	0705-10-1	OBJECT MARKER, TYPE I	EA	3	\$	\$
57	0706-3	REFLECTIVE PAVEMENT MARKERS	EA	352	\$	\$
58	0710-90	PAINTED PAVEMENT MARKINGS - FINAL SURFACE	LS	1	\$	\$
59	0711-11-125	24" WHITE THERMO PLASTIC STRIPING	LF	86	\$	\$
60	0711-11-141	6" WHITE THERMO 2-4 SKIP	GM	0.061	\$	\$
61	0711-11-170	THERMO STANDARD WHITE ARROW	EA	12	\$	\$
62	0711-14-160	THERMO STANDARD WHITE MESSAGE	EA	2	\$	\$
63	0711-14-170	THERMO PREFORMED ARROW (BIKE THROUGH ARROW)	EA	2	\$	\$
64	0711-16-101	6" WHITE THERMO PLASTIC STRIPING	GM	1.973	\$	\$
65	0711-16-201	6" YELLOW THERMO PLASTIC STRIPING	GM	2.000	\$	\$
SUM OF ITEMS 1 - 65 = TOTAL BID AMOUNT					\$	



COMPONENTS OF CONTRACT PLANS SET
ROADWAY PLANS

A DETAILED INDEX APPEARS ON THE KEY SHEET OF EACH COMPONENT

INDEX OF ROADWAY PLANS

SHEET NO.	SHEET DESCRIPTION
1	KEY SHEET
2	SUMMARY OF PAY ITEMS
3-11	SUMMARY OF QUANTITIES
12	OPTIONAL MATERIALS TABULATION
13-15	DRAINAGE MAP
16-18	TYPICAL SECTIONS
19	TYPICAL SECTION DETAILS
20	PROJECT LAYOUT
21	PROJECT NOTES
22-28	ROADWAY PLAN
29-35	ROADWAY PROFILE
36	SIDE STREET PROFILES
37	DRIVEWAY PROFILES
38-40	INTERSECTION LAYOUT /DETAIL
41-56	DRAINAGE STRUCTURES
57-67	POND DETAILS
68-138	CROSS SECTIONS
139-140	STORMWATER POLLUTION PREVENTION PLAN
141-148	EROSION CONTROL PLAN
149-152	WETLAND DELINEATION SHEETS
153-155	TRAFFIC CONTROL PLANS
156-158	UTILITY ADJUSTMENT SHEETS
159	PROJECT CONTROL SHEET
160-164	SIGNING AND PAVEMENT MARKING PLAN
165	GUIDESIGN WORKSHEET

GOVERNING DESIGN STANDARDS:
Florida Department of Transportation, FY2019-20 Standard Plans for Road and Bridge Construction and applicable interim revisions (IRs)

Standard Plans for Road and Bridge Construction and associated IRs are available at the following website: <http://www.fdot.gov/design/standardplans>

APPLICABLE IRs:

GOVERNING STANDARD SPECIFICATIONS:

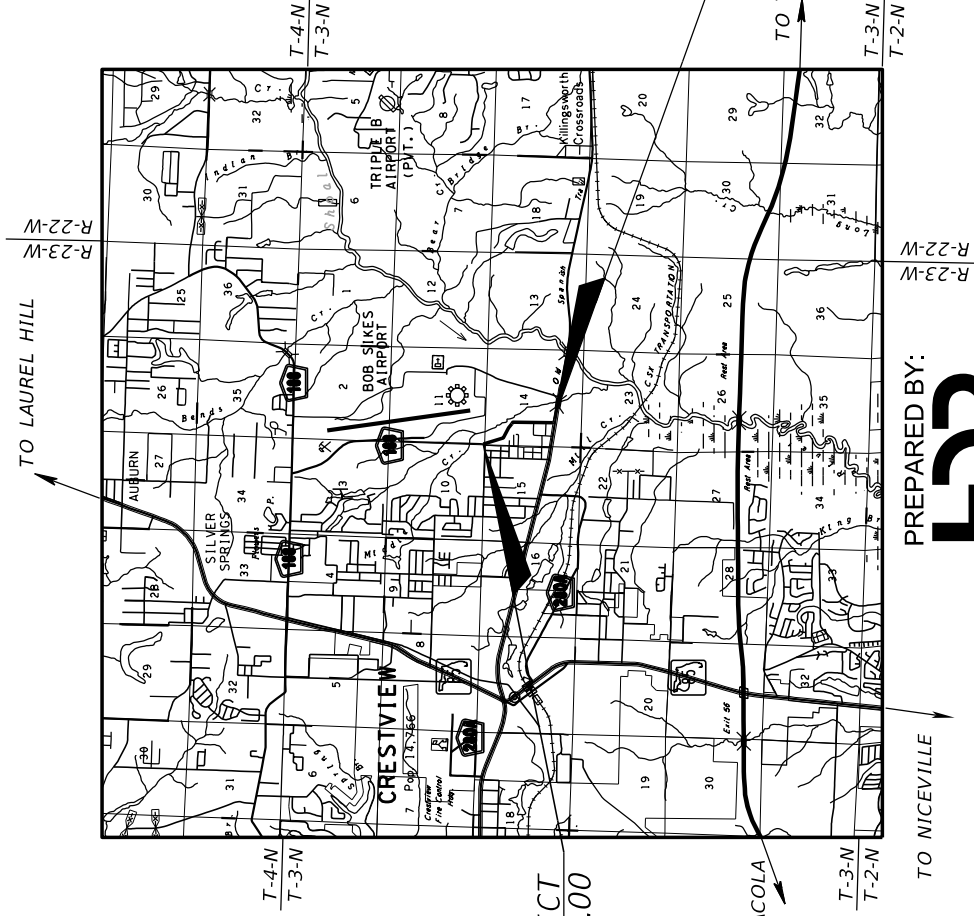
Florida Department of Transportation, January 2019 Standard Specifications for Road and Bridge Construction at the following website: <http://www.fdot.gov/programmanagement/Implemented/SpecBooks>

REVISIONS

ROADWAY PLANS: 2, 4, 154 AND 155 (REVISED 8/22/19)

OKALOOSA COUNTY, FLORIDA

FOY SHAW PARKWAY FROM US 90 TO JOHN GIVENS ROAD FINANCIAL PROJECT ID 425617-2-94-01



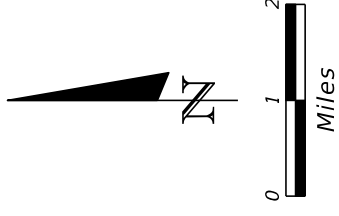
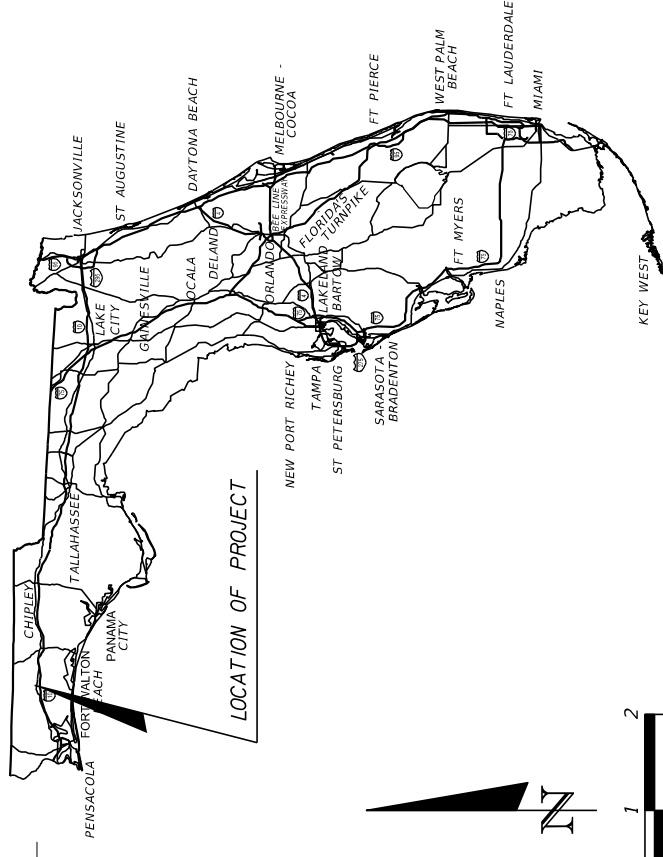
PREPARED BY:
HDR

HDR Engineering, Inc.
25 West Cedar Street, Suite 200
Pensacola, Florida 32502
(850) 432-6800
www.hdrinc.com
Certificate of Authorization No. 4213

PROJECT LENGTH IS BASED ON \square OF CONSTRUCTION

LENGTH OF PROJECT	
	MILES
ROADWAY	0.819
BRIDGES	0.819
NET LENGTH OF PROJECT	0.819
EXCEPTIONS	
GROSS LENGTH OF PROJECT	0.819

OKALOOSA COUNTY PROJECT MANAGER: SCOTT BITTERMAN P.E.

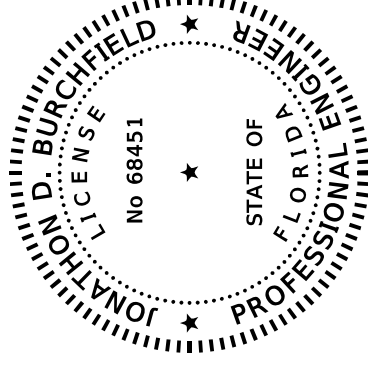


COMMISSIONERS
GRAHAM FOUNTAIN
CAROLYN KETCHEL
NATHAN BOYLES
TREY GOODWIN
KELLY WINDES

DISTRICT ONE
DISTRICT TWO
DISTRICT THREE
DISTRICT FOUR
DISTRICT FIVE

COUNTY ADMINISTRATOR
JOHN HOFSTAD
PUBLIC WORKS DIRECTOR:
JASON AUTREY, P.E.
ENGINEER OF RECORD:
JONATHON BURCHFIELD, P.E.
68451

THIS ITEM HAS BEEN DIGITALLY
SIGNED AND SEALED BY



ON THE DATE ADJACENT TO THE SEAL
PRINTED COPIES OF THIS DOCUMENT ARE
NOT CONSIDERED SIGNED AND SEALED
AND THE SIGNATURE MUST BE VERIFIED
ON ANY ELECTRONIC COPIES.

SHEET
NO.

1

SUMMARY OF PAY ITEMS

PAY ITEM NO.	DESCRIPTION	UNIT	TOTAL	PAY ITEM NO.	DESCRIPTION	UNIT	TOTAL
0101- 1-	MOBILIZATION	LS	1	0711- 14-170	THERMOPLASTIC PAVEMENT MARKINGS, PERFORMED, ARROWS (BIKE THRU ARROW)	EA	2
0102- 1-	MAINTENANCE OR REPAIRS	EA	1	0711- 16-101	THERMOPLASTIC PAVEMENT MARKINGS, WHITE, SOLID, 6"	GM	1.973
0102- 60-	CONCRETE MATERIAL FOR DRIVEWAY MAINTENANCE	EA	1	0711- 16-201	THERMOPLASTIC PAVEMENT MARKINGS, YELLOW, SOLID, 6"	GM	2.000
0102- 74- 1	WORK ZONE SIGN	EA	11070	0999- 25	INITIAL CONTINGENCY AMOUNT, DO NOT BID	LS	1
0102- 74- 2	CHANNELIZING DEVICE- TYPES I, II, DI, VP, DRUM, OR LCD	ED	4050				
0102- 99-	PORTABLE CHANGEABLE MESSAGE SIGN, TEMPORARY	ED	3240				
0102-911- 2	PAVEMENT MARKING REMOVABLE TAPE, WHITE/BLACK, SOLID	ED	1080				
0102-912- 2	PAVEMENT MARKING REMOVABLE TAPE, YELLOW, SOLID	LF	620				
0104- 1-	ARTIFICIAL COVERINGS/ROLLED EROSION CONTROL PRODUCTS	LF	460				
0104- 10- 3	SEDIMENT BARRIER	SY	58356				
0104- 12-	STAKED TURBIDITY BARRIER- NYLON REINFORCED PVC	LF	12178				
0104- 15-	SOIL TRACKING PREVENTION DEVICE	LF	3159				
0104- 18-	INLET PROTECTION SYSTEM	EA	4				
0110- 1- 1	CLEARING & GRUBBING	EA	25				
0110- 4-	REMOVAL OF EXISTING CONCRETE PAVEMENT	LS/AC	1/17.59				
0120- 1-	REGULAR EXCAVATION	SY	386				
0120- 4-	SUBSOIL EXCAVATION	CY	49296				
0120- 6-	EMBANKMENT	CY	4450				
0160- 4-	TYPE B STABILIZATION	CY	136151				
0162- 1- 11	PREPARED SOIL LAYER, FINISH SOIL, 6"	SY	20268				
0285-701-	OPTIONAL BASE, BASE GROUP 01	SY	58356				
0285-706-	OPTIONAL BASE, BASE GROUP 06	SY	4366				
0334- 1- 12	SUPERPAVE ASPH CONC, TRAFFIC B, PG76-22, PMA	SY	15064				
0337- 1- 80	ASPHALT CONCRETE FRICTION COURSE, TRAFFIC B, FC-9.5, PG 76-22, PMA	TN	1996.2				
0400- 1- 2	CONCRETE CLASS I, ENDWALLS	TN	988.5				
0400- 2- 2	CONCRETE CLASS II, ENDWALLS	CY	20.9				
0415- 1- 6	REINFORCING STEEL- MISCELLANEOUS	CY	27.4				
0425- 1-351	INLETS, CURB, TYPE P-5, <10'	LB	1648				
0425- 1-361	INLETS, CURB, TYPE P-6, <10'	EA	12				
0425- 1-521	INLETS, DT BOT, TYPE C, <10'	EA	1				
0425- 1-541	INLETS, DT BOT, TYPE D, <10'	EA	2				
0425- 1-551	INLETS, DT BOT, TYPE E, <10'	EA	1				
0425- 1-701	INLETS, GUTTER, TYPE S	EA	3				
0430-175-118	PIPE CULVERT, OPT MATERIAL, ROUND, 18"S/CD	LF	2732				
0430-175-124	PIPE CULVERT, OPT MATERIAL, ROUND, 24"S/CD	LF	906				
0430-185-154	PIPE CULVERT, OPT MATERIAL, JACK AND BORE, 54", STORM AND CROSS DRAIN	LF	246				
0430-185-172	PIPE CULVERT, OPT MATERIAL, JACK AND BORE, 72", STORM AND CROSS DRAIN	LF	328				
430-830	PIPE FILLING & PLUGGING	CY	164				
0430-982-125	MITERED END SECTION, OPTIONAL ROUND, 18" CD	EA	2				
0430-982-129	MITERED END SECTION, OPTIONAL ROUND, 24" CD	EA	1				
0455-133-2	SHEET PILING STEEL, TEMPORARY-CRITICAL	SF	8917				
0520- 1- 10	CONCRETE CURB & GUTTER, TYPE F	LF	3746				
0520- 2- 5	CONCRETE CURB, SPECIAL (RIBBON CURB)	LF	240				
0520- 6	SHOULDER GUTTER - CONCRETE	LF	1010				
0522- 2	CONCRETE SIDEWALK AND DRIVEWAYS, 6" THICK	SY	218				
0524- 1- 2	CONCRETE DITCH PAVEMENT - NON REINFORCED, 4"	SY	1825				
0530- 3- 4	RIPRAP, RUBBLE, F&I, DITCH LINING	TN	118.6				
0550-10-232	FENCING, TYPE B, VINYL COATING	LF	3579				
0550-60-213	FENCE GATE, TYPE B	EA	2				
0570- 1- 1	PERFORMANCE TURF	SY	39264				
0570- 1- 2	PERFORMANCE TURF, SOD	SY	19092				
0571- 1- 13	PLASTIC EROSION MAT, TYPE 3	SY	15359				
0700- 1- 11	SINGLE POST SIGN, F&I GROUND MOUNT, UP TO 12 SF	EA	5				
0700- 1- 60	SINGLE POST SIGN, REMOVE	EA	2				
0705- 10- 1	OBJECT MARKER, TYPE I	EA	3				
0706- 3-	RETRO-REFLECTIVE PAVEMENT MARKERS	EA	352				
0710- 90	PAINTED PAVEMENT MARKINGS - FINAL SURFACE	LS	1				
0711- 11-125	THERMOPLASTIC PAVEMENT MARKINGS, WHITE, SOLID, 24"	LF	86				
0711-11-141	THERMOPLASTIC PAVEMENT MARKINGS, WHITE, SKIP, 6"	GM	0.061				
0711-11-170	THERMOPLASTIC PAVEMENT MARKINGS, WHITE, ARROW	EA	12				
0711-14-160	THERMOPLASTIC PAVEMENT MARKINGS, WHITE, MESSAGE	EA	2				

DATE	DESCRIPTION	REVISIONS	DATE	DESCRIPTION
8/22/19	UPDATED QUANTITIES			
		SUMMARY OF PAY ITEMS		
Jonathon D. Burchfield, P.E. P.E. LICENSE NUMBER 68451 HDR Engineering, Inc. 25 West Cedar Street, Suite 200 Pensacola, FL 32502-5945 CERTIFICATE OF AUTHORIZATION 4213		OKALOOSA COUNTY		
		\$DATES \$ \$FILES \$ \$USERS \$		
		SHEET NO. 2		

SUMMARY OF EROSION AND SEDIMENT CONTROL DEVICES


LOCATION	SIDE	AREA ID	ARTIFICIAL COVERINGS		SEDIMENT BASIN		SEDIMENT BASIN CLEANOUT		SEDIMENT BARRIER		FLOATING TURBIDITY BARRIER		STAKED TURBIDITY BARRIER		SOIL TRACKING PREVENTION DEVICE		INLET PROTECTION SYSTEM		DESIGN NOTES	CONSTRUCTION REMARKS																				
			P	F	P	F	P	F	P	F	P	F	P	F	P	F	P	F																						
STA. TO STA.			0104	1	0104	7	0104	9	0104	10	3	0104	11	0104	12	0104	15	0104	18																					
			SY		EA		EA		LF		LF		LF		EA		EA																							
			P	F	P	F	P	F	P	F	P	F	P	F	P	F	P	F																						
125+27.00	LT																		1																					
128+30.00	LT																		1																					
129+00.00	LT																		1																					
130+00.00	LT																		1																					
132+00.00	LT																		1																					
136+00.00	RT																		1																					
SUB-TOTAL:																																								6.0

SUMMARY OF TEMPORARY TRAFFIC CONTROL PLAN ITEMS

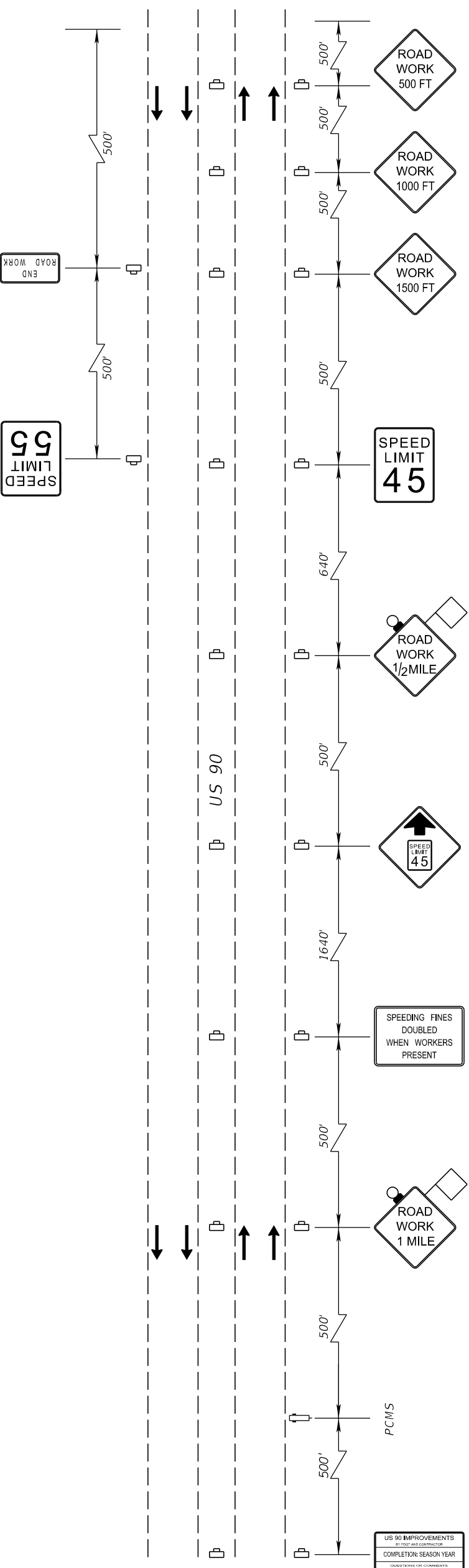
PAY ITEM NO.	PAY ITEM DESCRIPTION	UNIT	PHASE I				TOTAL		DESIGN NOTES	CONSTRUCTION REMARKS		
			DURATION		QUANTITY		P	F			P	F
			DAYS		P	F						
102-60	WORK ZONE SIGNS	ED	270		41	11070	11070					
102-74-1	CHANNELIZING DEVICE- TYPES I, II, DI, VP, DRUM, OR LCD	ED	270		15	4050	4050					
102-74-2	CHANNELIZING DEVICE- TYPE III, 6'	ED	270		12	3240	3240					
102-99	PORTABLE CHANGEABLE MESSAGE SIGN, TEMPORARY	ED	270		4	1080	1080					
0102 911 2	REMOVABLE TAPE PAVE MARKING-WHITE/BLACK	LF			460	460	460		BASELINE SURVEY US 90			
0102 912 2	REMOVABLE TAPE PAVE MARKING-WHITE/BLACK	LF			620	620	620		BASELINE SURVEY US 90			

SUMMARY OF REMOVAL ITEMS

PAY ITEM NO.	PAY ITEM DESCRIPTION	LOCATION	SIDE	AREA ID	LENGTH	WIDTH	UNITS	SECONDARY UNITS (IF LUMP SUM)	QUANTITY		DESIGN NOTES	CONSTRUCTION REMARKS
									P	F		
0110 1 1	CLEARING AND GRUBBING	STA. TO STA.						AC	1 / 0.253			BASE LINE SURVEY US 90
		531+21.14 TO 536+42.89	LT	28675			L5					
		100+85.74 TO 144+25.00		28710			L5		1 / 17.251			CL CONST. FOY SHAW PKWY
		105+05.13 TO 106+07.07	LT	28699			L5		1 / 0.082			CL CONST. FOY SHAW PKWY
0110 4	REMOVAL OF EXISTING CONCRETE									1 / 17.59		
		536+95.17 TO 541+83.68	RT	67941			SY					BASE LINE SURVEY US 90
		132+79.01 TO 133+30.89	RT	30139			SY		72.1			CL CONST. FOY SHAW PKWY
		133+11.38 TO 133+15.62	RT	30141			SY		1.0			CL CONST. FOY SHAW PKWY
		141+64.77 TO 142+36.19	RT	30137			SY		159.4			CL CONST. FOY SHAW PKWY
									386			

DATE	DESCRIPTION	REVISIONS	 <p>Jonathon D. Burchfield, P.E. P.E. LICENSE NUMBER 68451 HDR Engineering, Inc. 25 West Cedar Street, Suite 200 Pensacola, FL 32502-5945 CERTIFICATE OF AUTHORIZATION 4213</p>	<p align="center">SUMMARY OF QUANTITIES</p>	SHEET NO.
8/22/19	UPDATED QUANTITIES	<p align="center">Addendum No. 1</p>			4

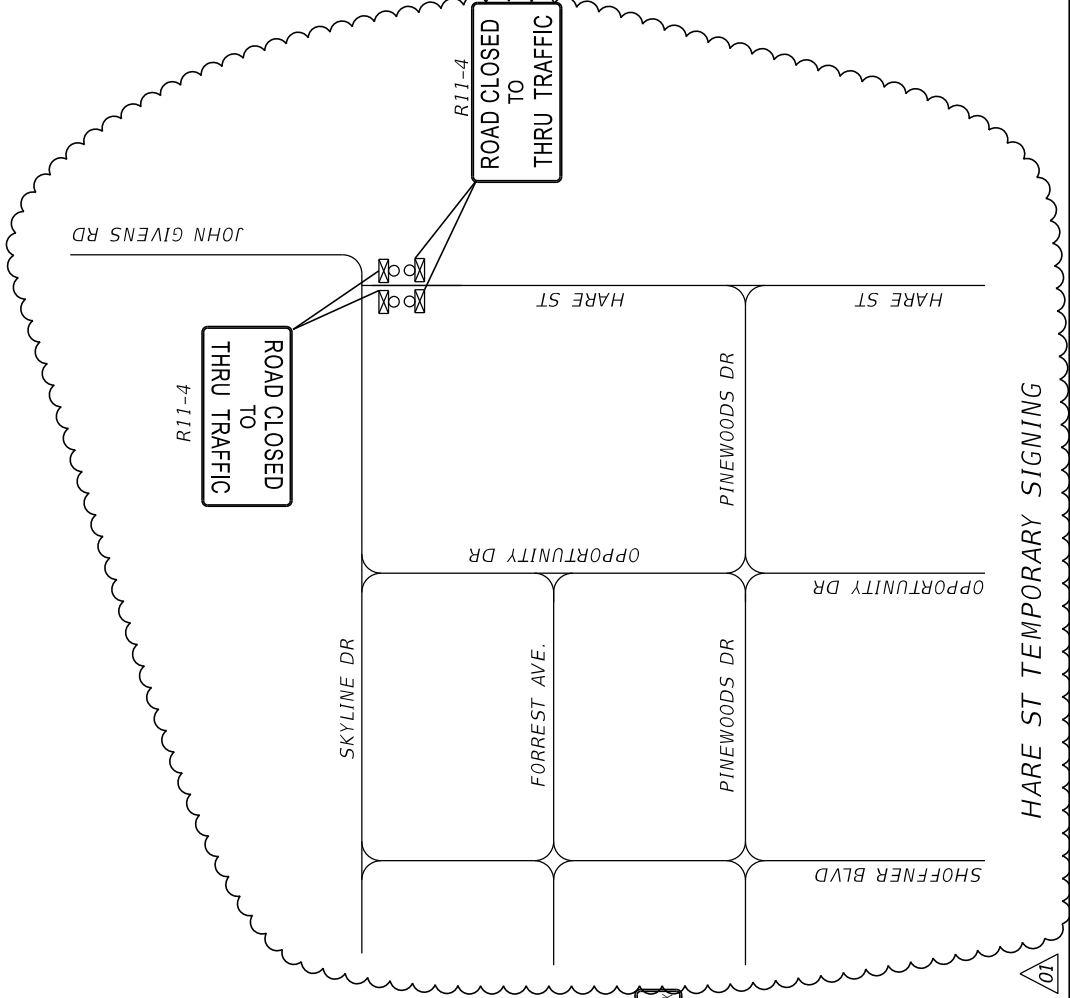
PRIOR TO US 90 AND FOY SHAW INTERSECTION EAST AND WEST BOUND



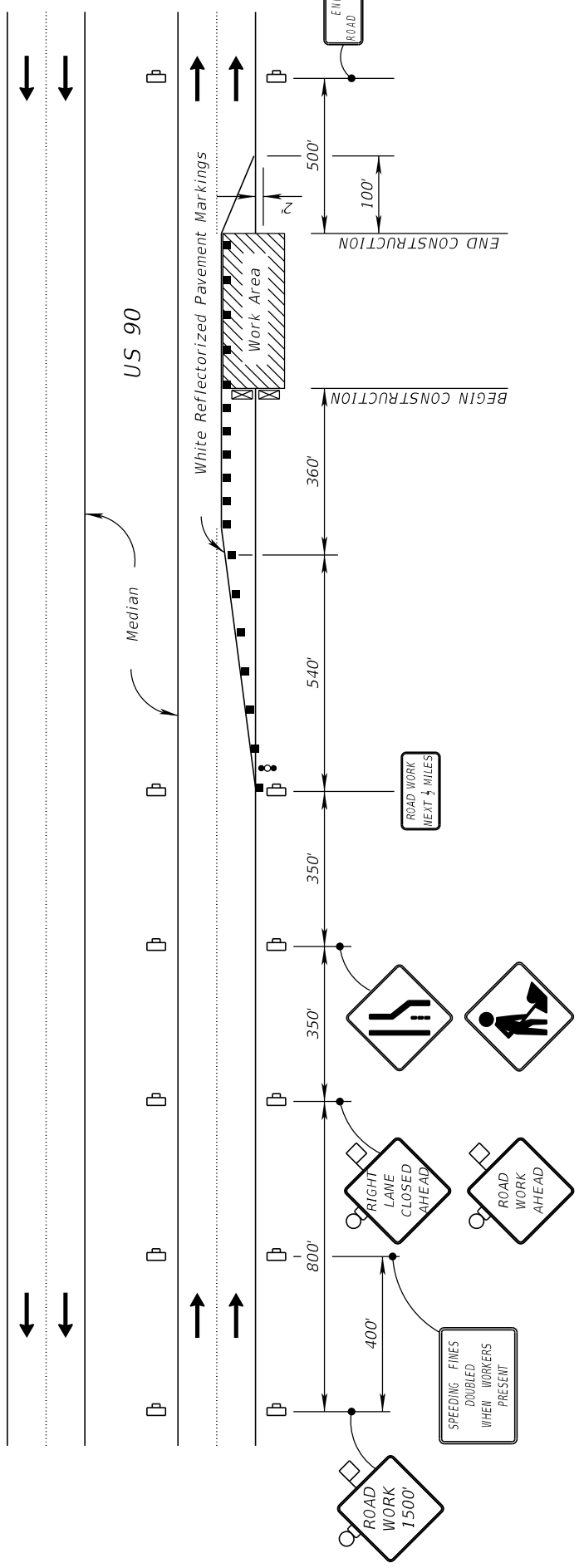
PIS

US 90 IMPROVEMENTS
BY ROOF AND CONTRACTOR
COMPLETION: SEASON YEAR
DRAWN BY: ROADWORKS
217205-52-01

ADVANCE SIGNING DETAIL ALONG US 90

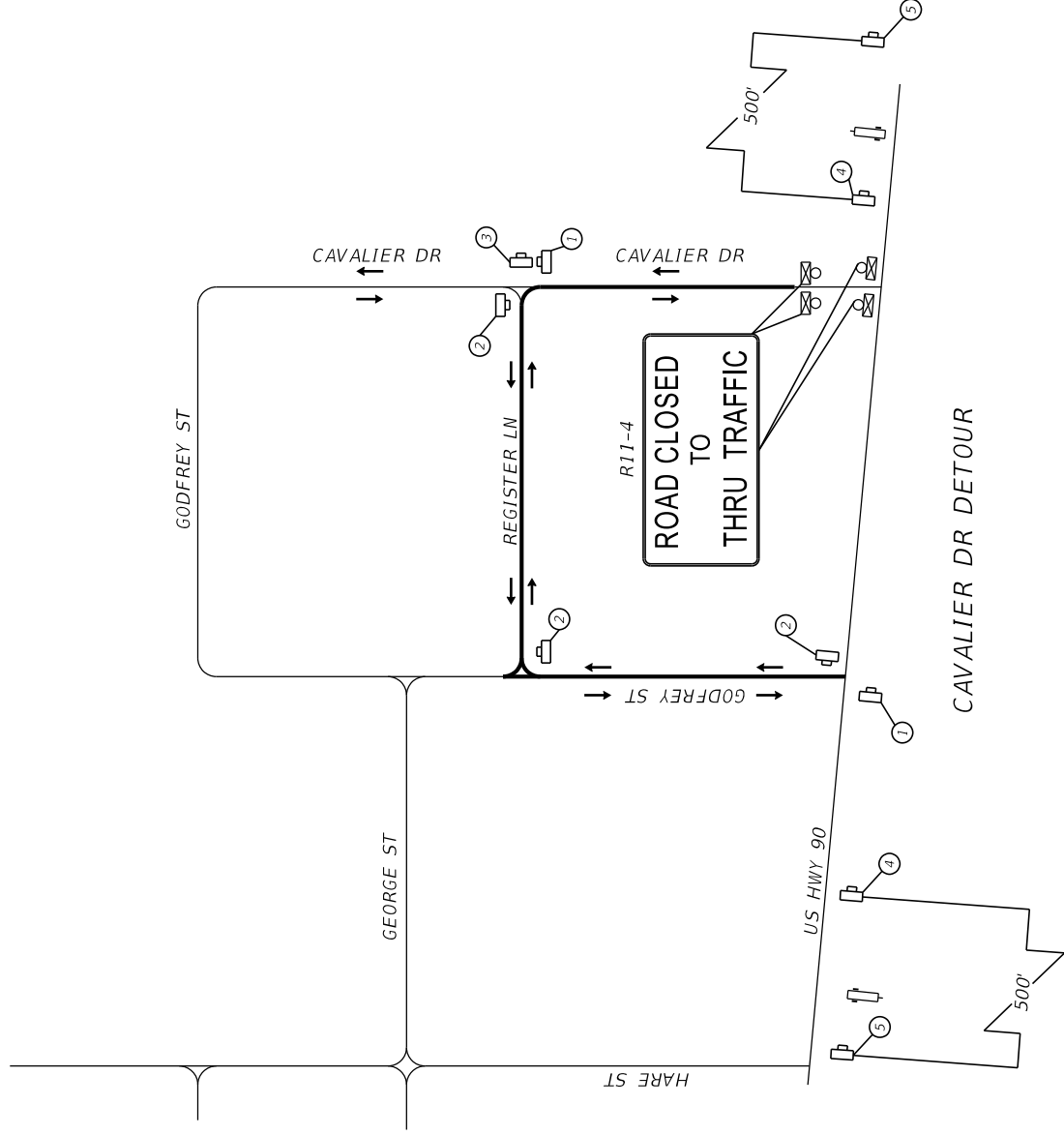
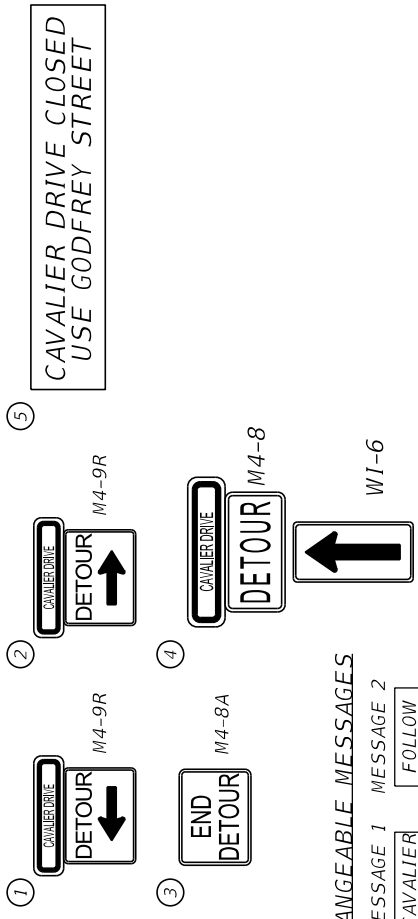


LANE CLOSURE SIGNING ALONG US 90



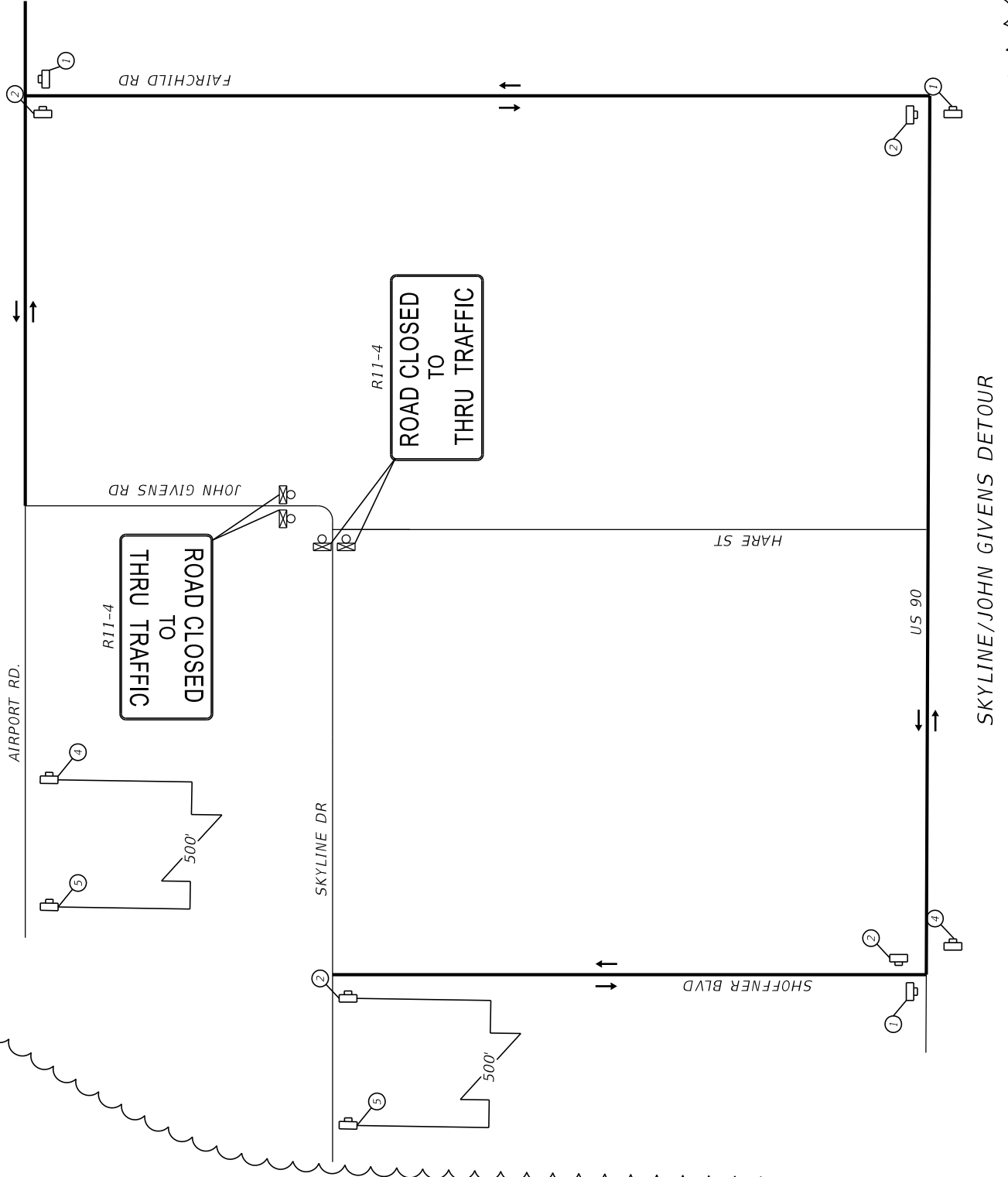
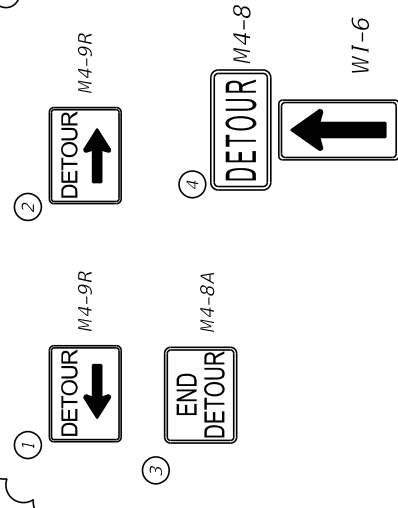
REVISIONS		OKALOOSA COUNTY		TRAFFIC CONTROL PLAN		SHEET NO.	
DATE	DESCRIPTION	DATE	DESCRIPTION	OKALOOSA COUNTY		NO.	
8/22/19	MOVED DETAIL TO THIS SHEET			OKALOOSA COUNTY		154	
	Addendum No. 1			OKALOOSA COUNTY			
				FPID: 425617-2-94-01			
				Jonathon D. Burchfield, P.E. P.E. LICENSE NUMBER 68451 HDR Engineering, Inc. 25 West Cedar Street, Suite 200 Pensacola, FL 32502-5945 CERTIFICATE OF AUTHORIZATION 4213			

NOTE: DETOURS ARE NOT TO BE UTILIZED AT THE SAME TIME



LEGEND

- ↑ TRAFFIC FLOW
- WORK ZONE SIGN
- PORTABLE CHANGEABLE MESSAGE SIGN
- TYPE III BARRICADE (W/ FLASHING LIGHT)



NOTICE: THE OFFICIAL RECORD OF THIS SHEET IS THE ELECTRONIC FILE SIGNED AND SEALED UNDER RULE 61G15-23.003, F.A.C.

DATE	DESCRIPTION	DATE	DESCRIPTION
8/22/19	ADDED SKYLINE/JOHN GIVENS DETOUR		

Jonathon D. Burchfield, P.E.
 P.E. LICENSE NUMBER 68451
 HDR Engineering, Inc.
 25 West Cedar Street, Suite 200
 Pensacola, FL 32502-5945
 CERTIFICATE OF AUTHORIZATION 4213



OKALOOSA COUNTY
 FPID: 425617-2-94-01

SHEET NO. 155

Addendum No. 1